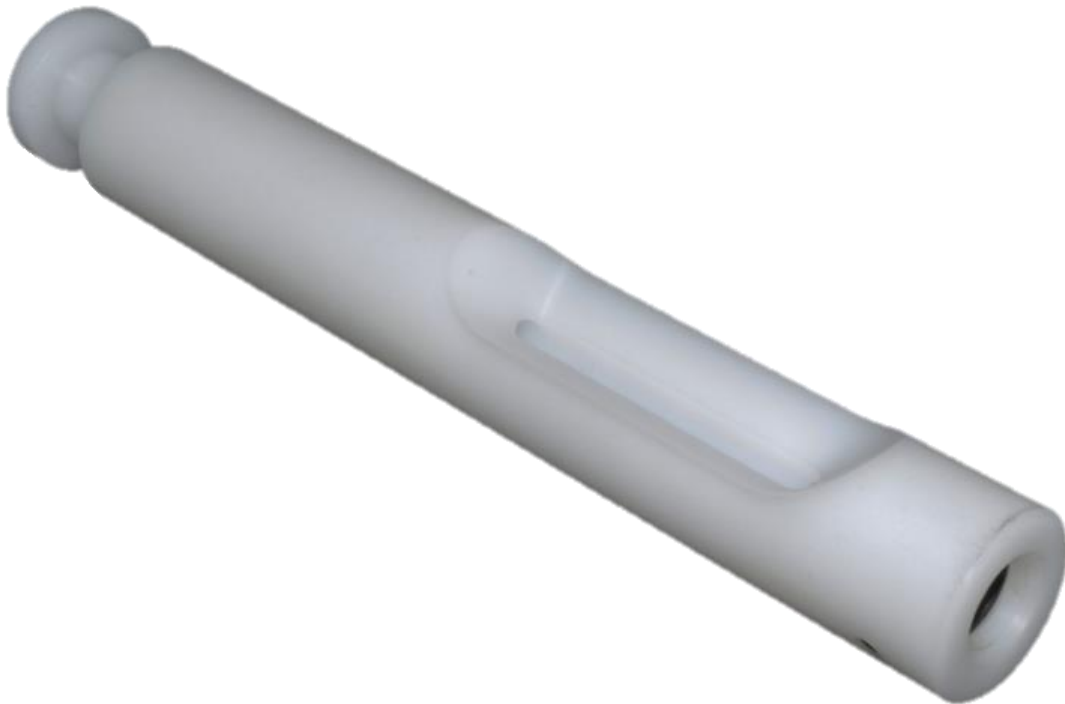


# **RIMFIRE PERFECTED**

**AR-15 22lr Cleaning Rod Guide**

**Instructions for Installation and Use**



**Figure 1.1 - BoreBuddy Cleaning Rod Guide**

**WARNING! Exercise careful firearms handling procedures at all times. Ensure the weapon is unloaded prior to installation of the components provided in this kit.**

**BoreBuddy recommends a double visual chamber inspection (look once, look away, look again), followed a physical chamber inspection to ensure the rifle is unloaded. This kit is intended for training or recreational purposes only, any unlawful use is strictly forbidden.**

**Always wear eye and ear protection when discharging firearms (yes, even 22lr!) and follow the Four Rules for firearm safety: Always keep firearms pointed in a safe direction, treat every firearm as if it is loaded, keep your finger off the trigger until you are ready to shoot and be sure of your target and what is beyond it.**

### Ar-15 22lr Cleaning Rod Guide

#### **What does the Cleaning Rod Guide do?**

The BoreBuddy guide clicks into place with an audible and tactile snap and centers your cleaning rod to prevent bore wear and the oversize solvent port cut into the side of the guide allows for easy application of your favorite solvent. There are two solvent seal O-rings included with the purchase and can be installed into the internal groove at the front of the guide. Clean your 22lr AR easily and without the mess.



Figure 1.2 - BoreBuddy Cleaning Rod being inserted in the upper receiver

## How to use a Cleaning Rod Guide

To use the guide, simply remove the bolt assembly and charging handle, and insert the guide as shown in Figure 1.2. Align the solvent port with the ejection port (as shown in Figure 1.3), and push the guide until it seats fully on the barrel. A ball detent will engage in the barrel ring when the guide is fully inserted with a tactile and audible click. The bore guide is now ready to use. It will appear as shown in Figure 1.3 when installed correctly. We recommend inserting a jag and patch into the guide dry, and then applying your solvent of choice to the patch visible through the ejection port) using a pipette or eyedropper bottle.



Figure 1.3 - Cleaning Rod Guide fully inserted and ready to use

## Contact Us

Thank you for your purchase of the BoreBuddy AR-15 22lr reliability components! Should you have any questions please visit our website ([BoreBuddy.com](http://BoreBuddy.com)) and check the frequently asked questions. Feel free to join the forums and interact with the community ([forums.borebuddy.com](http://forums.borebuddy.com)). If you need to contact us directly, click the “Contact Us” tab at the top of the home page on the website.

For wholesale inquiries or bulk order for clubs, organizations, or law enforcement agencies, please email [Sales@BoreBuddy.com](mailto:Sales@BoreBuddy.com) or contact us by our contact form.